

Part list for Trimming device

Texi Treccia C Matic

 ***texi***

UT Installation and adjustment

1. Adjustment of lower thread trimming components:

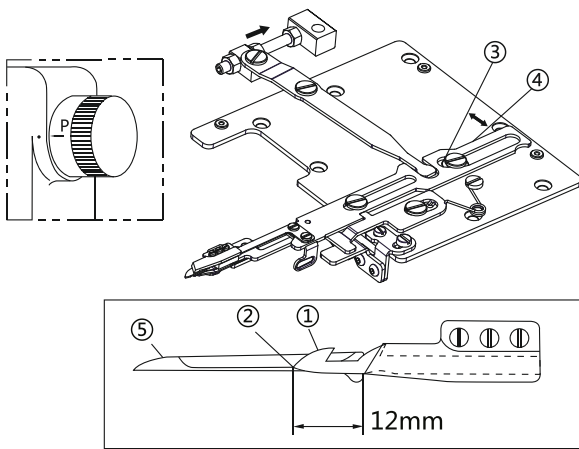
First align point P of the sewing machine handle with the dot/mark, the needle is on the top needle position, bend the needle to the front end.

[A] Move the movable knife position on the lower thread trimming assembly to the thread trimming limit position.

[B] The tip ② of the movable knife ① and the curved needle ⑤ on the lower thread trimming assembly. The distance between the shank end is 12mm, and the tip ② of the movable knife is align with the inner 1/3 of the upper edge of the looper;

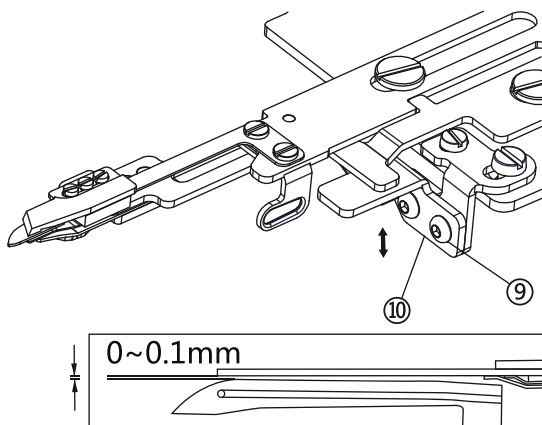
[C] Loosen the screw ③ Adjust the movable knife holder ④ Make the tip of the movable knife horizontal swing to achieve the adjustment effect;

[D] Tighten the screw ③ after adjustment.



2. Adjustment of the height of the lower thread trimmer:

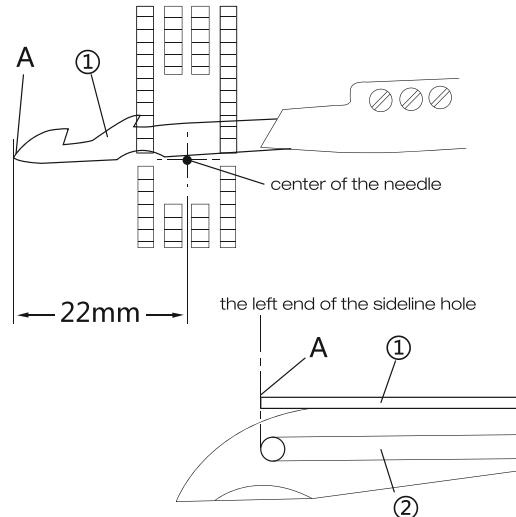
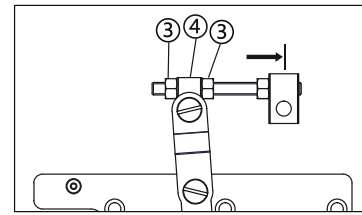
Loosen the screw ⑨ and adjust the height adjustment plate ⑩ so that the movable knife. The distance between the knife face and the looper is 0-0.1 (mm), the adjustment is completed. Tighten the screw ⑨;



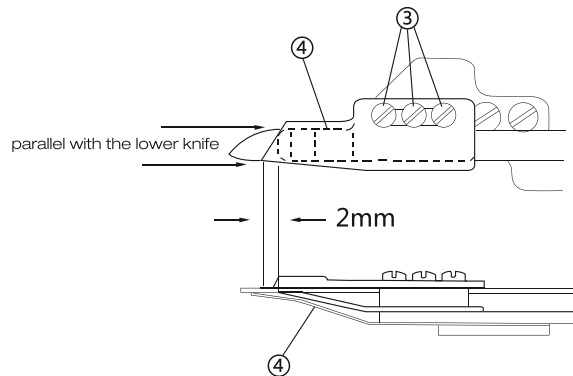
3. Position adjustment of the movable knife and needle of the lower thread trimming group:

[A] Loosen the nut ③ and move the movable knife of the lower thread trimming group to the most from the needle near dead point.

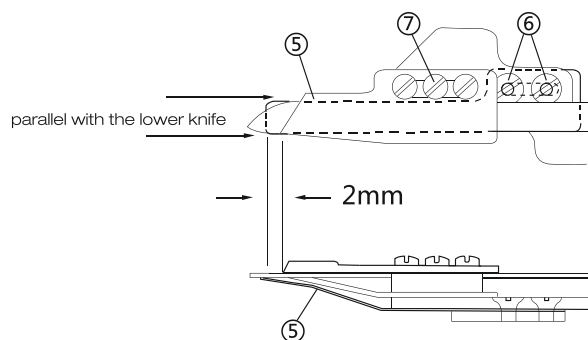
[B] Adjust the connecting rod sliding block ④ left and right to make the movable knife ① tool tip A distance from the needle center is 22mm, and it is aligned with the left end of the looper ② side line hole.



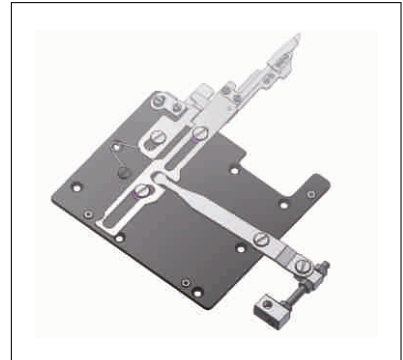
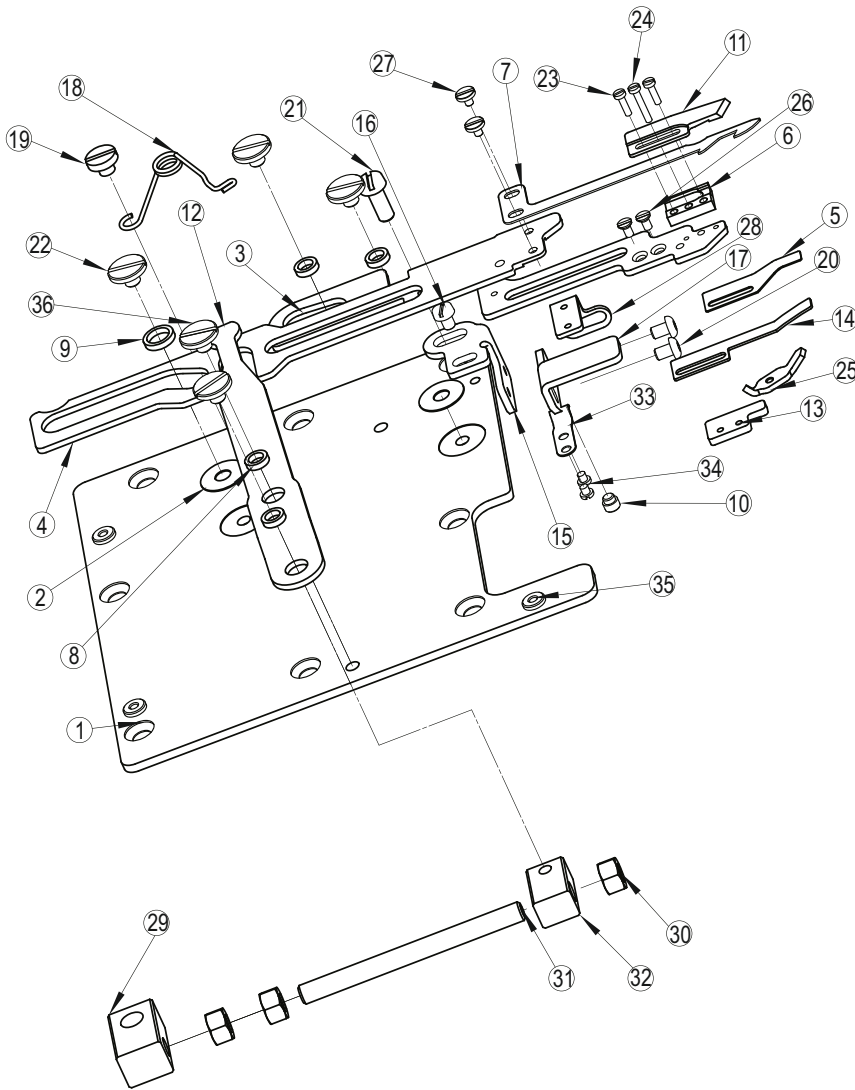
[C] The installation position of the movable knife pressing knife spring ④ is away from the fixed knife at 2mm of the tip of the knife, loosen the screw ③ to adjust it.



[D] The installation position of the lower thread clamp ⑤ is away from the fixed knife 2mm point, loosen the screw ⑥ to adjust the clamp position so that it is parallel to the movable knife, the clamp ⑤ pressure is adjusted by screw ⑦. The clamping force of the tensioner is about 0.1kg, not too big or too small.

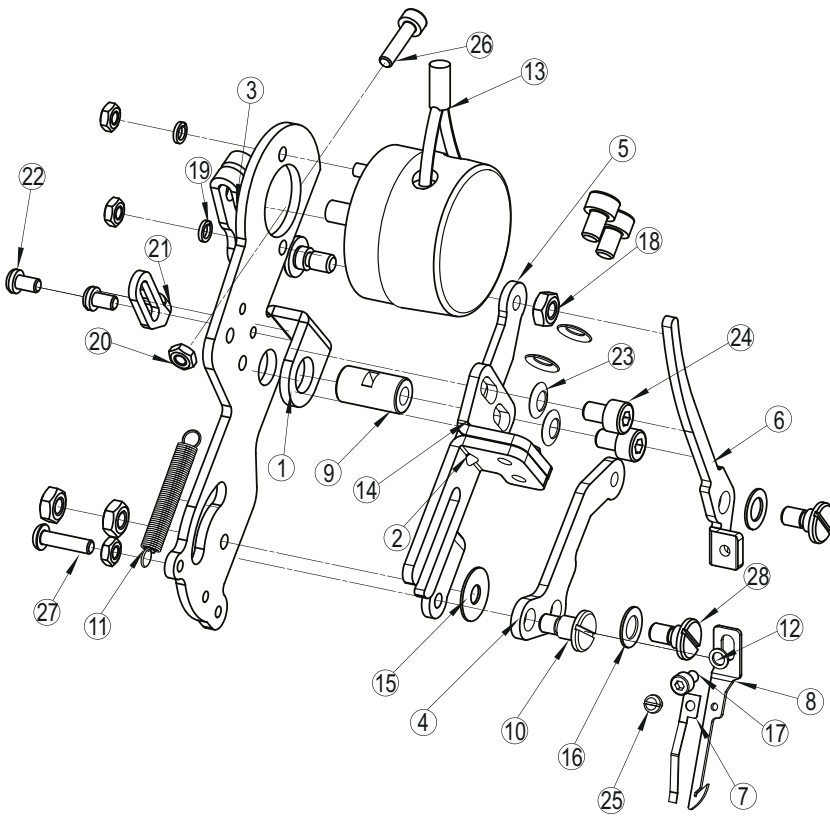


UT components



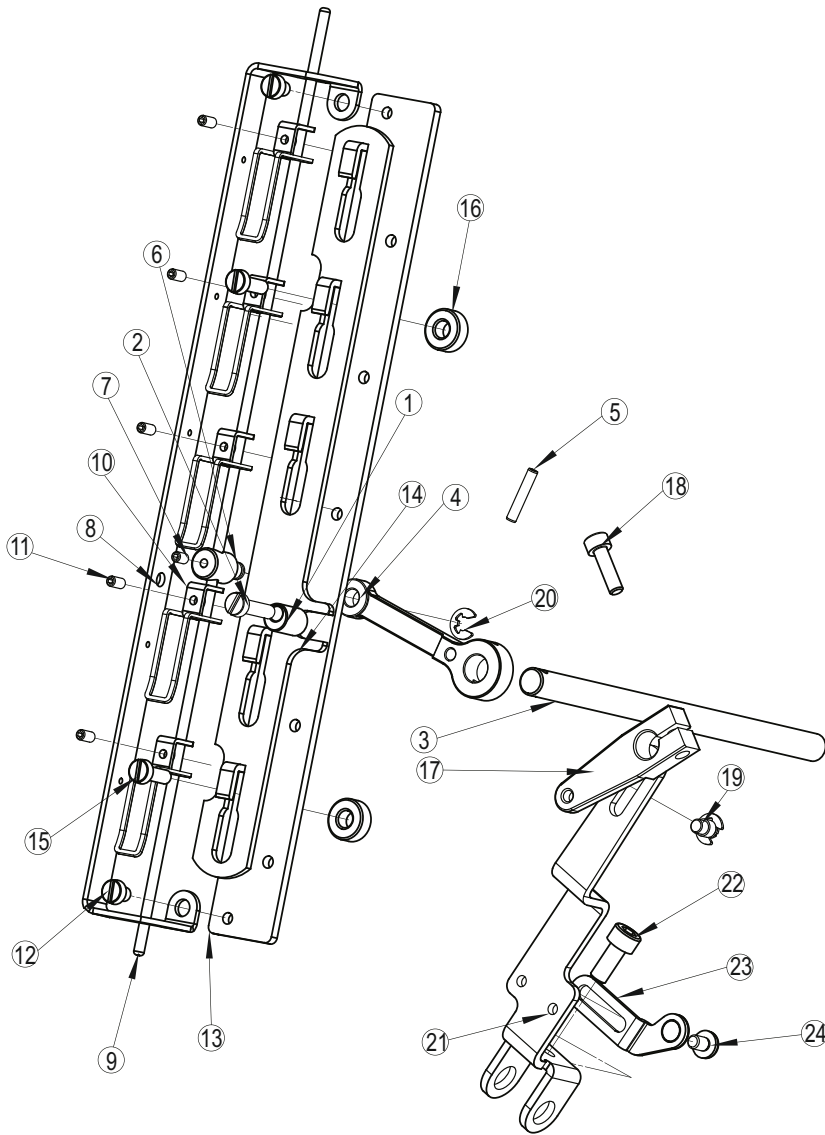
序号 REF.NO	品号 PART NO.	数量 QTY
①	ZJ/C2500EUTA-001	1
②	P/W600EUT-001-002	2
③	SI/C007JEUTA-004	1
④	ZJ/C2500EUTA-002	1
⑤	KE303A-5	1
⑥	P/W600EUT-001-006	1
⑦	350220.A	1
⑧	TE1125B	4
⑨	TE1744	1
⑩	Si/C858KEUT-000-027	1
⑪	350218.5A	1
⑫	Si/C007JEUTA-002	1
⑬	P/W600EUT-001-010	1
⑭	UT967/S	1
⑮	Si/C007JEUTA-005	1
⑯	TE014-01	1
⑰	Si/C007JEUTA-006	1
⑱	TE798	1
⑲	TE929	1
⑳	GB/T70.1-M3*4-12.9-FH	2
㉑	TE201	1
㉒	TE1743	5
㉓	P/W600EUT-001-022	2
㉔	P/W600EUT-001-023	1
㉕	KE303A-7	1
㉖	SM250/S	2
㉗	TE2182	2
㉘	Si/C007JEUTA-007	1
㉙	Y/VC2700EUT-007	1
⑳	GB/T6170-M5-6-FH	3
㉑	GB/T77-M5*50-45-FH	1
㉒	Y/VC2700EUT-006	1
㉓	P/W600EUT-001-009	1
㉔	SM230/S	2
㉕	ZJ/C2500EUTA-003	3
㉖	Y/VF2500EUT-001-21	1

WP components



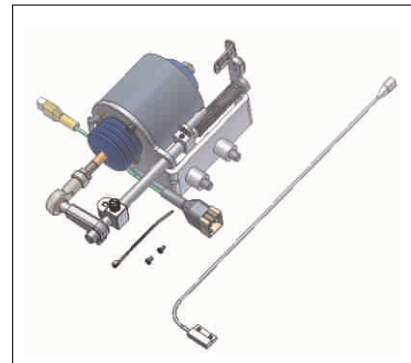
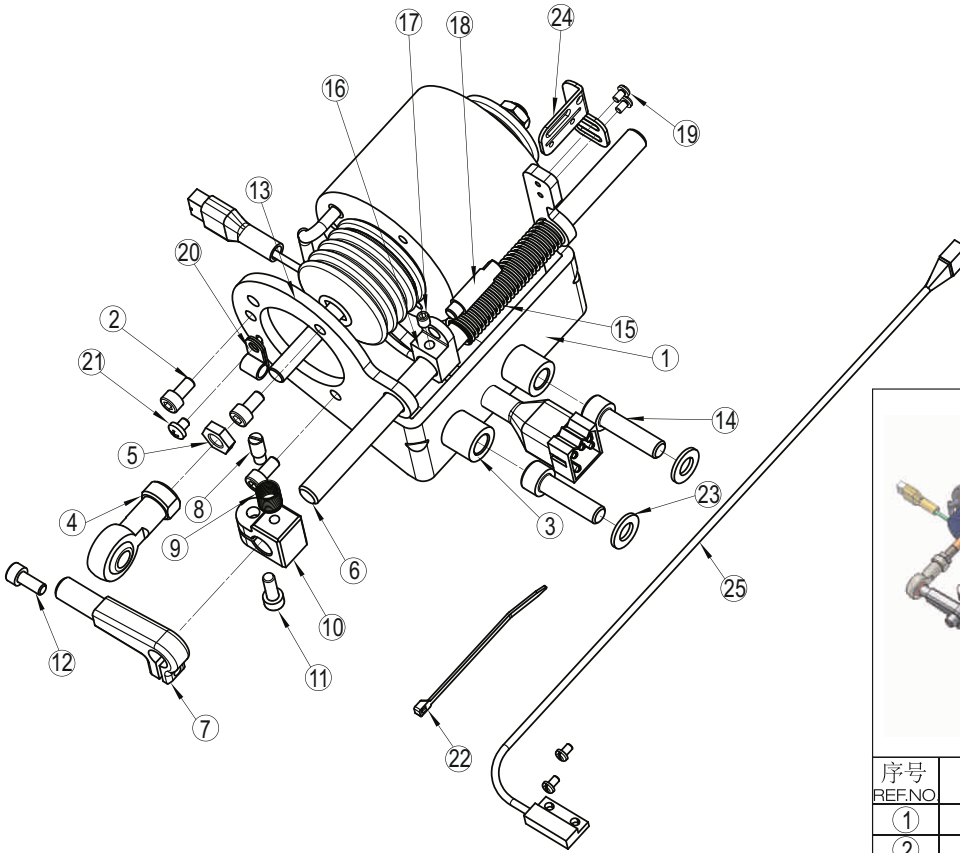
序号 REFNO	品号 PART NO.	数量 QTY
①	P/W600EWPC-001	1
②	P/W600EWPC-003	1
③	P/W600EWPC-004	1
④	P/W600EWPC-005	1
⑤	P/W600EWPC-007	1
⑥	P/W600EWPC-008	1
⑦	P/W600EWPC-009	1
⑧	P/W600EWPC-010	1
⑨	P/W600EWPC-011	1
⑩	P/W600EWPC-013	1
⑪	P/W600EWPC-014	1
⑫	GB/T848-3-140HV-Zn-B	1
⑬	TE2144	1
⑭	P/W600EWPC-002	1
⑮	P/W600EWPC-018	1
⑯	P/W600EWPC-015	2
⑰	GB/T70.1-M3*4-12.9-FH	1
⑱	GB/T6170-M4-10-FH	4
⑲	GB/T93-3-65Mn-FH	2
⑳	GB/T6170-M3-8-FH	4
㉑	P/W600EWPC-006	1
㉒	SM330/S	2
㉓	GB/T1972.B-8-FH	4
㉔	GB/T70.1-M4*6-12.9-FH	4
㉕	110034	1
㉖	GB/T70.2-M3*12-12.9-FH	1
㉗	GB/T70.2-M3*12-12.9-FH	1
㉘	P/W600EWPC-012	3

TT components



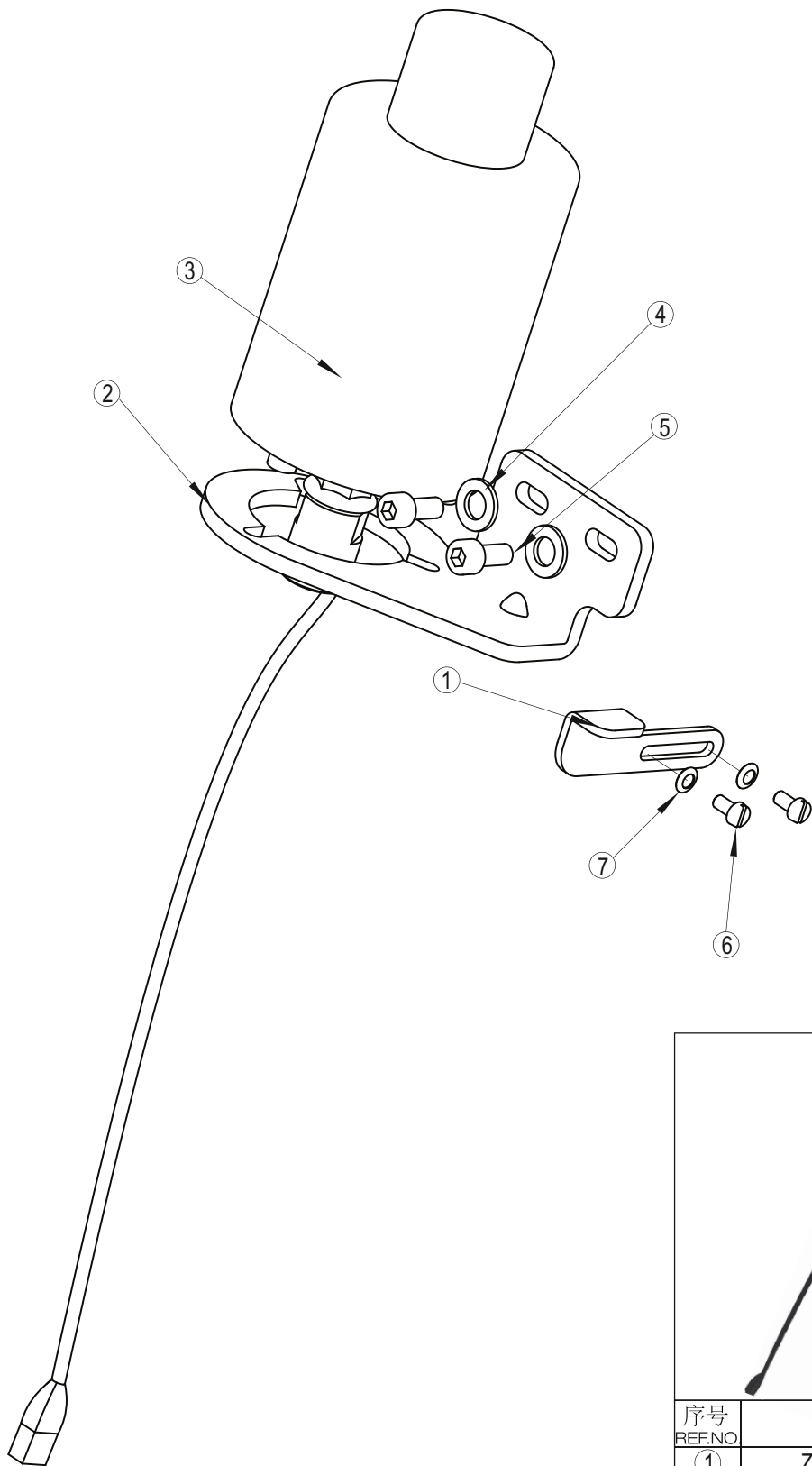
序号 REF.NO	品号 PART NO.	数量 QTY
①	Y/VC2700ETT-007-3	1
②	GB/T823-M4*16-12.9-FH	1
③	Y/VC2700ETT-007-2-2	1
④	Y/VC2700ETT-007-2-1	1
⑤	GB/T879.1-3*16	1
⑥	Y/VC2700ETT-007-1	1
⑦	GB/T77-M3*4-45H-FH	1
⑧	Y/VC2700ETT-003	1
⑨	Y/VC2700ETT-002	1
⑩	Y/VC2700ETT-006	5
⑪	GB/T77-M3*6-45H-FH	5
⑫	TE806/P	2
⑬	Y/VC2700ETT-004	1
⑭	Y/VC2700ETT-005	1
⑮	TE201	2
⑯	Y/VC2700ETT-001	2
⑰	Y/VC2700ETT-008-1	1
⑱	GB/T70.1-M4*14-12.9-FH	1
⑲	Y/VC2700ETT-008-4	1
⑳	GB/T896-4-65Mn-FH	2
㉑	Y/VC2700ETT-008-2	1
㉒	GB/T70.1-M5*14-12.9-FH	1
㉓	Y/VC2700ETT-008-3	1
㉔	TE806/P	1

DD components



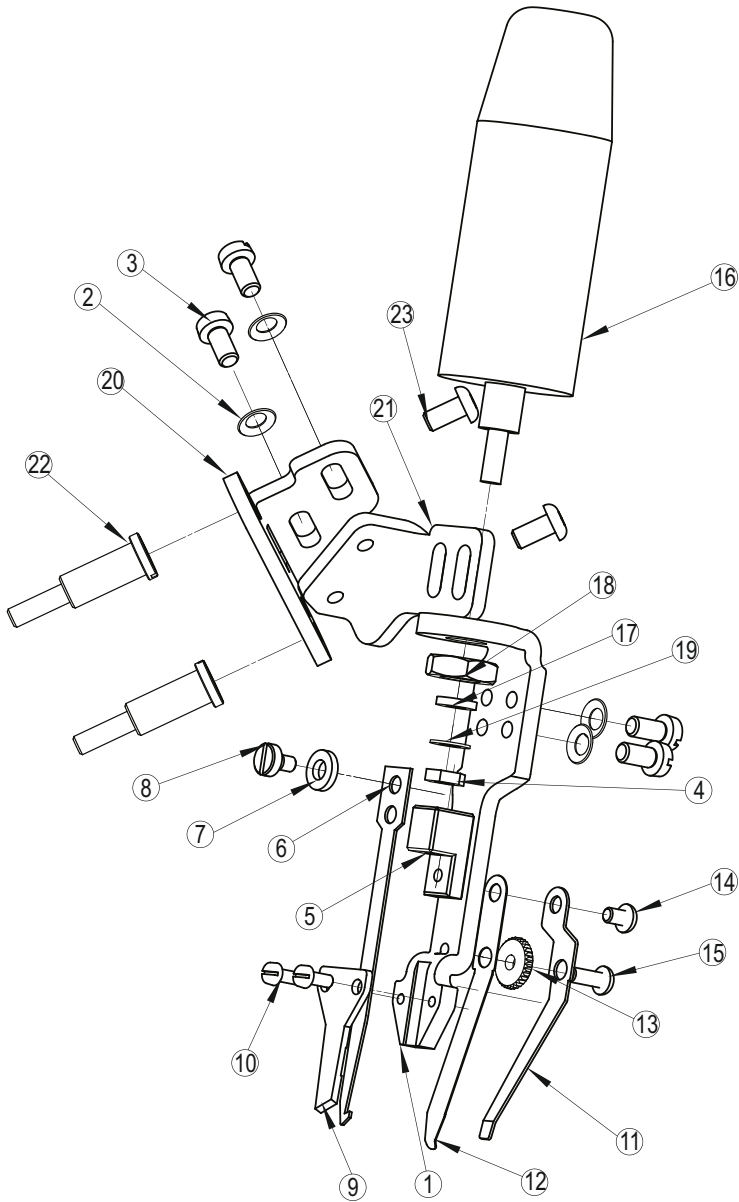
序号 REF.NO	品号 PART NO.	数量 QTY
①	Y/VC2700EDD-001	1
②	GB/T 70.1 M5 x10-12.9-FH	3
③	Y/VC2700EDD-001-2	2
④	Y/VC2700EDD-003	1
⑤	GB/T 6174 M8-8-Zn-8	1
⑥	Y/VC2700EDD-007	1
⑦	Y/VC2700EDD-004	1
⑧	Y/VC2700EDD-006	1
⑨	P/W600PUTA-001-7	1
⑩	Y/VC2700EDD-009	1
⑪	GB/T 70.1 M5 x14-12.9-FH	1
⑫	GB/T 70.1 M5 x12-12.9-FH	1
⑬	TE2197-1	1
⑭	GB/T 70.1 M8 x30-12.9-FH	2
⑮	p.w600put-001-012	1
⑯	Y/VC2700EDD-002-1	1
⑰	GB/T 77 M5 x5-45H-FH	1
⑱	Y/VC2700EDD-002-2	1
⑲	SM331/S	4
⑳	ACC-2	1
㉑	007017A/P	1
㉒	ALT-085S-8	1
㉓	GB/T97.1-8-140HV-Zn-B	2
㉔	Y/VC2700EDD-8	1
㉕	TE1364	1

LFE components



序号 REF.NO	品号 PART NO.	数量 QTY
①	ZJ/C2500ELFE-002	1
②	YVC2700ELFE-001	1
③	ZJ/C2500ELFE-003	1
④	GB/T97.1-6-140HV-Zn-B	2
⑤	GB/T70.1-M6*16-12.9-FH-A	2
⑥	P/W600PST-010	2
⑦	GB/T1972.B-8-FH	2

ST components



序号 REFNO	品号 PART NO.	数量 QTY
①	P/W600ESTA-001	1
②	GB/T1972.B-8-FH	4
③	P/W600PST-010	4
④	JPT-2570-4 (小螺母)	1
⑤	P/W600PSTA-008	1
⑥	P/W600PST-004	1
⑦	P/W600PST-006	1
⑧	P/W600PST-007	1
⑨	P/W600PST-005	1
⑩	P/W600PST-003	2
⑪	KE233	1
⑫	KE232.A	1
⑬	P/W600EST-018	1
⑭	GB/T70.1-M3*4-12.9-FH	1
⑮	GB/T70.2-M3*8-12.9-FH	1
⑯	JPT-2570(电磁铁)	1
⑰	JPT-2570-1 (橡胶垫)	1
⑱	JPT-2570-2 (大螺母)	1
⑲	JPT-2570-3 (垫圈)	1
⑳	P/W600ESTB-003	1
㉑	P/W600ESTA-002	1
㉒	P/W600ESTC-010	2
㉓	GB/T70.2-M4*8-12.9-FH	2



Dealer :

--